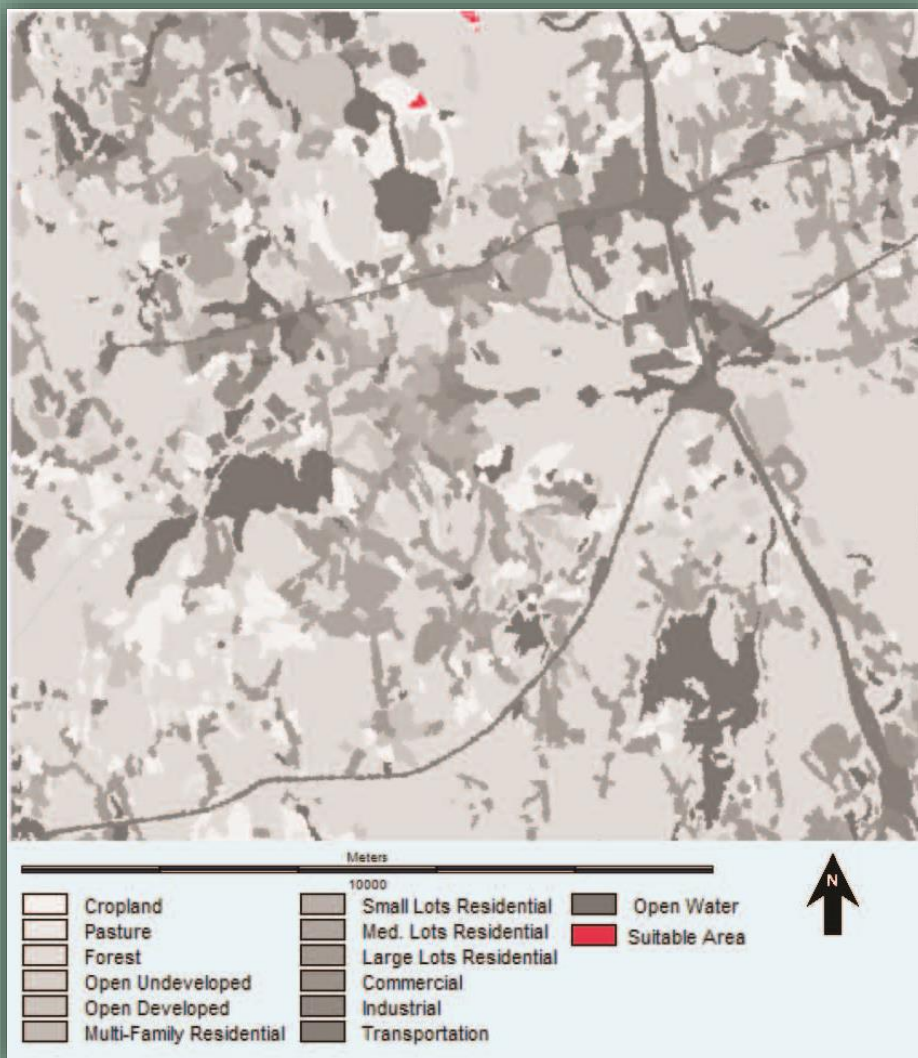


Most Suitable Site for a New Small Aeroport In Westborough, Massachusetts

Westborough is a small town and to increase its accessibility a new areoport can be built to shorten traveling time. The table below shows the parameter and criteria used to plot the most suitable site.

Reference:

<http://boards.independenttraveler.com/showthread.php?11052-What-Size-Airport-Do-You-Prefer>



<u>Criteria</u>	<u>Parameter</u>
Slope	Less than 5 degree
Landuse	Cropland, Pasture, Open undeveloped area
Distance away from residential and commercial	1000 m